

Phantom[®] Radio Receiver Unit

Radio Settings

This radio module has been designed so that it can be fitted quickly and easily to any make and age of electric garage door operator.

Technical Information

The Phantom Electronic Receiver Unit operates on the 433MHZ frequency. Transmitters are available in 1, 2 or 4 button options. This means that up to 4 units can be operated from one transmitter, cutting down on the amount of transmitters required. As these units are radio controlled the signal will travel through walls and doors so the transmitter does not have to be pointed directly at the garage door.

Operation

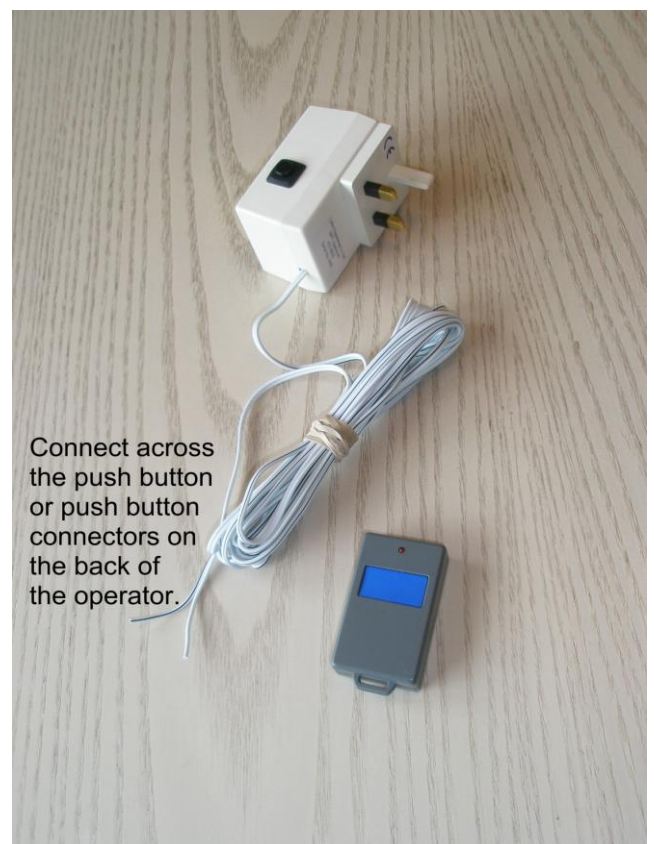
Plug the receiver interface into a mains power socket and attach the cable across the push button or the push button connectors on the back of the operator. To operate the door, press the button on the transmitter. It is possible to stop the door in any position by pressing the blue transmitter button again.

Very occasionally the radio receiver unit may lose the transmitter code in its memory. The result of this will be that the operator will not respond when the transmitter is operated. This could be due to several reasons such as power surges or nearby lightning strikes.

Changing/ Re-coding the Receiver

1. Provision is made in the transmitter and receiver to select your own code.
2. Remove the battery cover from the transmitter by undoing the screw on the underside.
3. Select the desired code by moving the small code switches to the on or off positions, then replace the cover.
4. Locate the black button on the side of the receiver interface.
5. Ensure there is power to the receiver unit so it is ready to operate.
6. Firstly, press and hold this button. Then, while this button is depressed, press the blue transmitter button until the door starts moving. The receiver will now remember the new code, even if there is a power failure.
7. Release both buttons. The next press of the blue transmitter button should operate the unit.
8. If there is no response go back to point 4 and repeat the process.

Note: The battery used in the transmitter is 23A 12V, which is available in most shops and will last 2 or more years depending on usage.



All our products are designed and handmade in the UK by Lukes Engineering Co. Ltd.